

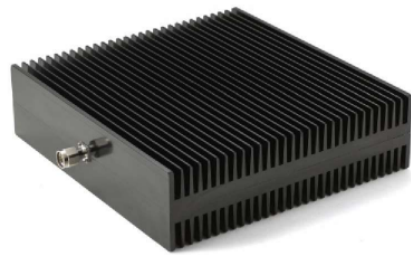
## Dummy Load-500watt, DC-6ghz, N F

Coaxial loads are mainly used to absorb power from RF or microwave systems, and can be used as dummy loads for antennas and transmitter terminals. It can also be used as a matching port for multi-port microwave devices such as circulators and directional couplers, ensuring that the impedance is matched and accurately measured.

- Wide working frequency
- Low standing wave coefficient
- Aluminum alloy radiator

### **Coaxial Dummy Load**

#### **500W 6GHz N-TYPE**



Electrical data		Requirements
Frequency range	DC-6GHZ	
Characteristic impedance	50Ω	
VSWR	≤1.20	
Input Power	500w@100°C Heat Shrink	
Environmental data		Requirements
Temperature range	-55°C to 125°C	
Material data		Requirements
Connector parts	Material	Plating
Body	Brass	Nickel
Pin contacts	Brass	Gold-plated
Insulators	Teflon	
Dimension	320 *320*64	

**Regd Add: F36a, Street No.8, Vishwas Park, Uttam Nagar, New Delhi - 110059**

**Tel: +91-9716582707 , +91-8810686612**

**Email: info@agartel.com , sales@agartel.com**

**web: www.agartel.in / www.rfcableconnector.in**